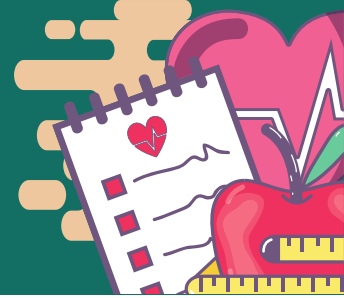


NEW APPROACHES TO ADDRESS OBESITY

VIRTUAL BRIEFING: DECEMBER 14, 2022 - 11 A.M. ET

BIOGRAPHIES



Laurie Donze, PhD

Program Director, Clinical Applications and Prevention Branch, Division of Cardiovascular Sciences, National Heart, Lung, and Blood Institute, NIH

Dr. Laurie Friedman Donze, PhD is a Program Director in the Clinical Applications and Prevention Branch of the Division of Cardiovascular Sciences at NHLBI. Her research and programmatic interests focus on the treatment and prevention of obesity and cardiovascular conditions in adults via sustained adherence to healthy lifestyle behaviors and/or medication. Her portfolio includes randomized clinical trials targeting weight loss, diet, sleep, and hypertension, as well as mechanistic trials and observational studies examining the psychiatric and psychosocial comorbidities and predictors of cardiovascular disease. She also manages fellowship and career development grants in her areas of expertise. Dr. Donze is a co-chair of NHLBI's Obesity Working Group and a member of the NIH Obesity Research Task Force Senior Leadership Group. Dr. Donze received her bachelor's degree in psychology from the University of California, Berkeley, and her master's and PhD in psychology from Michigan State University. Prior to joining NHLBI, Dr. Donze worked as the Deputy Director and supervising psychologist of the Johns Hopkins Weight Management Center, where she also held a faculty appointment in the Johns Hopkins School of Medicine and was a co-investigator on several clinical trials, including the NIH-funded Look AHEAD trial. Dr. Donze then worked as a Scientific Review Officer for the National Center for Complementary and Alternative Medicine at NIH from 2003-2010, after which she worked in full-time private clinical practice before returning to NIH in 2020. She has been licensed as a psychologist in Maryland since 1997 and currently maintains a small clinical practice via telepsychology.



Jasmine George, PhD

Louis Sullivan Science Policy Fellow, Research!America

Dr. Jasmine George is a native of Virginia Beach, Virginia, and is currently a science policy fellow for Research!America, under the Louis Sullivan fellowship. She attended North Carolina Agricultural and Technical State University, where she received her Bachelor of Science in Biology.

She then received her Master of Science in Biomedical Research at Morehouse School of Medicine. This thesis work included clinical studies and community outreach in underserved populations. She also served within quality control for Noramco, Inc a former subsidiary of Johnson and Johnson. She recently graduated with her Doctor of Philosophy in Biomedical Science at Morehouse School of Medicine, where she was a RISE fellow. Jasmine is actively involved in Diversity, Equity, and Inclusion (DEI) for National Science Policy Network, where she serves on the DEI committee. She is also the co-founder and co-coordinator of the HBCU Science Policy College Tour, which aims to increase minority access to science policy and science communication resources.



Tiffany M. Powell-Wiley, MD, MPH
Stadtman Investigator; Chief, Social Determinants of Obesity and Cardiovascular Risk Laboratory, Division of Intramural Research, National Heart, Lung, and Blood Institute, NIH;
Adjunct Investigator, Intramural Research Program, National Institute on Minority Health and Health Disparities, NIH

Tiffany M. Powell-Wiley MD, MPH is an Earl Stadtman Investigator and Chief of the Social Determinants of Obesity and Cardiovascular Risk Laboratory at the National Institutes of Health with a joint appointment in the Cardiovascular Branch of the Division of Intramural Research at the National Heart, Lung, and Blood Institute (NHLBI) and the Intramural Research Program of the National Institute on Minority Health and Health Disparities. Dr. Powell-Wiley's interdisciplinary team uses community-engaged research, epidemiologic methods, and translational approaches to better understand social factors that promote obesity and limit cardiovascular health. In 2021, Dr. Powell-Wiley's innovative work was recognized with the American Heart Association's Population Research Prize. Dr. Powell-Wiley is an associate editor for *Frontiers in Cardiovascular Medicine* and she serves as an editorial board member for *Circulation*. At NIH, Dr. Powell-Wiley has mentored more than 50 research fellows at various career stages, several of whom are now tenure-track, NIH-funded faculty. She has been recognized through NHLBI Director's awards for her mentorship of research fellows and for promoting diversity in the biomedical workforce through her mentoring efforts. Dr. Powell-Wiley graduated summa cum laude with a BSE in chemical engineering from the University of Michigan in Ann Arbor. She received an MPH in Epidemiology from the University of North Carolina at Chapel Hill.

She graduated with an MD from Duke University School of Medicine, where she was inducted into the Alpha Omega Alpha Medical Honor Society. Prior to joining NIH, Dr. Powell-Wiley completed an internal medicine residency at Brigham and Women's Hospital and a cardiology fellowship at the University of Texas Southwestern Medical Center, where she served as the Cardiology Division's first chief fellow.



E. Albert Reece, MD, PhD, MBA
Dean Emeritus and Former University Executive Vice President; Endowed Professor and Director, Center for Advanced Research Training and Innovation (CARTI); Co-Director, Center for Birth Defects Research

Dr. E. Albert Reece is the former Executive Vice President at the University of Maryland, and Dean Emeritus of the UM School of Medicine. He is the Endowed Professor and Director of the Center for Advanced Research Training and Innovation, and the Co-Director of the Center for Birth Defects Research. He is a member of the prestigious National Academy of Medicine, and a professor in the departments of Ob/Gyn, Medicine, and Biochemistry & Molecular Biology. He oversees a NIH-funded research program. His laboratory studies the causes and prevention of diabetes-induced birth defects. He has over 500 publications.

A native of Jamaica, West Indies, he received a Bachelor of Science degree with honors (Magna Cum Laude) from Long Island University, a MD degree from New York University School of Medicine; residency in OB/GYN at Columbia University Medical Center, and a fellowship in maternal-fetal medicine at Yale School of Medicine. He has a PhD degree in Biochemistry from the University of the West Indies, Jamaica, and an MBA degree from the Fox School of Business & Management at Temple University. Previously, he was a member of the Yale full-time faculty for almost 10 years; the Abraham Roth Professor and Chair of Ob/Gyn at Temple University School of Medicine, and Vice Chancellor and Dean of the University of Arkansas College of Medicine.



Ken Thorpe, PhD
Robert W. Woodruff Professor and Chair of the Department of Health Policy & Management, Rollins School of Public Health, Emory University

Kenneth Thorpe, PhD, is the Robert W. Woodruff Professor and Chair of the Department of Health Policy & Management, in the Rollins School of Public Health of Emory University, Atlanta, Georgia.

He is also the chairman of the Partnership to Fight Chronic Disease (PFCD), a coalition of over 120 national and state-based organizations consisting of patients, providers, community organizations, business and labor groups, and health policy experts to raise awareness of the negative impact chronic disease has on the nation's health and economy. PFCD has crafted policy solutions globally. Most recently his work has focused on COVID-19, chronic disease, and public health interventions to mitigate the virus. He is also Chair of the board of the Better Medicare Alliance an organization focusing on the Medicare Advantage program.

In addition to holding a number of faculty positions, Thorpe was Deputy Assistant Secretary for Health Policy in the U.S. Department of Health and Human Services from 1993 to 1995. In this capacity, he coordinated all financial estimates and program impacts of President Clinton's health care reform proposals for the White House. He also directed the administration's estimation efforts in dealing with Congressional health care reform proposals during the 103rd and 104th sessions of Congress.

As the executive director of the PFCD and respected health care expert, Thorpe regularly testifies before numerous committees in the U.S. Senate and House on many aspects of health care reform, including disease prevention, wellness, and coordination of care.

Thorpe has authored and co-authored over 100 articles, book chapters, and books and is a frequent national presenter at health care conferences, television, and the media. He has appeared on Nightline, NBC News, ABC World News Tonight, CNN, CNBC, Fox Business Channel, and Newshour.

Previous academic positions held by Thorpe include the Vanselow Professor of Health Policy and Director, Institute for Health Services Research at Tulane University; Professor of Health Policy and Administration at the University of North Carolina at Chapel Hill; Associate Professor and Director of the Program on Health Care Financing and Insurance at the Harvard University School of Public Health; and Assistant Professor of Public Policy and Public Health at Columbia University. Thorpe has also held Visiting Faculty positions at Pepperdine University and Duke University.

In 1991, Thorpe was awarded the Young Investigator Award presented to the most promising health services researcher in the country under age 40 by the Association for Health Services Research. He also received the Hettleman Award for academic and scholarly research at the University of North Carolina and was provided an "Up and Comers" award by Modern Healthcare.

Thorpe received his PhD from the Pardee Rand Graduate School, an MA from Duke University, and his BA from the University of Michigan.



Laurie P. Whitsel, PhD, FAHA
Vice President of Policy Research and Translation; Senior Advisor-Physical Activity Alliance, American Heart Association

Laurie Whitsel, PhD is currently the National Vice President of Policy Research for the American Heart Association (AHA), helping to translate science into policy at a national level in the areas of cardiovascular disease and stroke prevention and health promotion. The association's policy research team provides policy development and the foundation for the American Heart Association's advocacy work at the global, national, state, and local levels. In addition to leading the association's policy research and translation efforts, she covers specific areas of policy development around prevention, including the tobacco endgame, health promotion, obesity, physical activity, and policy implementation and outcome evaluation.

Dr. Whitsel is the senior advisor to the Physical Activity Alliance which is the nation's broadest coalition dedicated to promoting physical activity for health. She also serves on the board of directors for the American Council on Exercise. She has formerly served on the boards of the Health Enhancement Research Organization (HERO), and other non-profit organizations. Dr. Whitsel presents at national conferences on prevention issues and evidence-based policy making. She has served on expert advisory groups with RAND, the National Academies of Sciences, Engineering, and Medicine, the Bipartisan Policy Center, the Centers for Disease Control and Prevention, and the Robert Wood Johnson Foundation. She serves as an expert peer reviewer for several scientific journals and is a consultant on research grant teams. She gives regular guest lectures at Columbia University. Her PhD is from Syracuse University and she is a Fellow and member of the AHA's National Scientific Council on Lifestyle and Cardiometabolic Health.



Disha Banik, Senior Legislative Assistant, Rep. Hakeem Jeffries (D-NY-08), Chairman of the House Democratic Caucus